

What Is A Watershed?

A watershed is a land area from which water drains into a central location, such as a lake or stream. The Upper Paint Lick Watershed drains into the Kentucky River.



Upper Paint Lick Watershed Facts

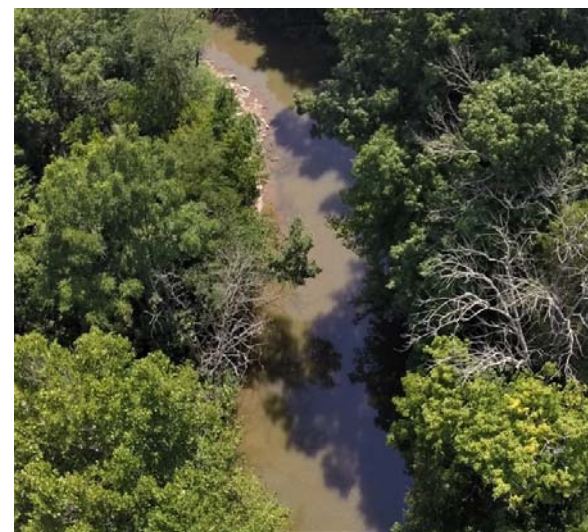
- Located in Garrard and Madison Counties
- Contains 112 linear miles of stream
- Spans an area of 28,030 acres (43.8 square miles)
- Covers part of City of Berea, agricultural areas, grazing and feeding operations as well as rural residential development
- Includes Conn Branch, Frog Branch, Mason Fork, Paint Lick Creek, Rocky Branch, Walker Branch, Walnut Meadow Branch, and White Lick Creek
- Land use is approximately 82% agricultural, about 15% rural and wooded, and 3% is residential and commercial

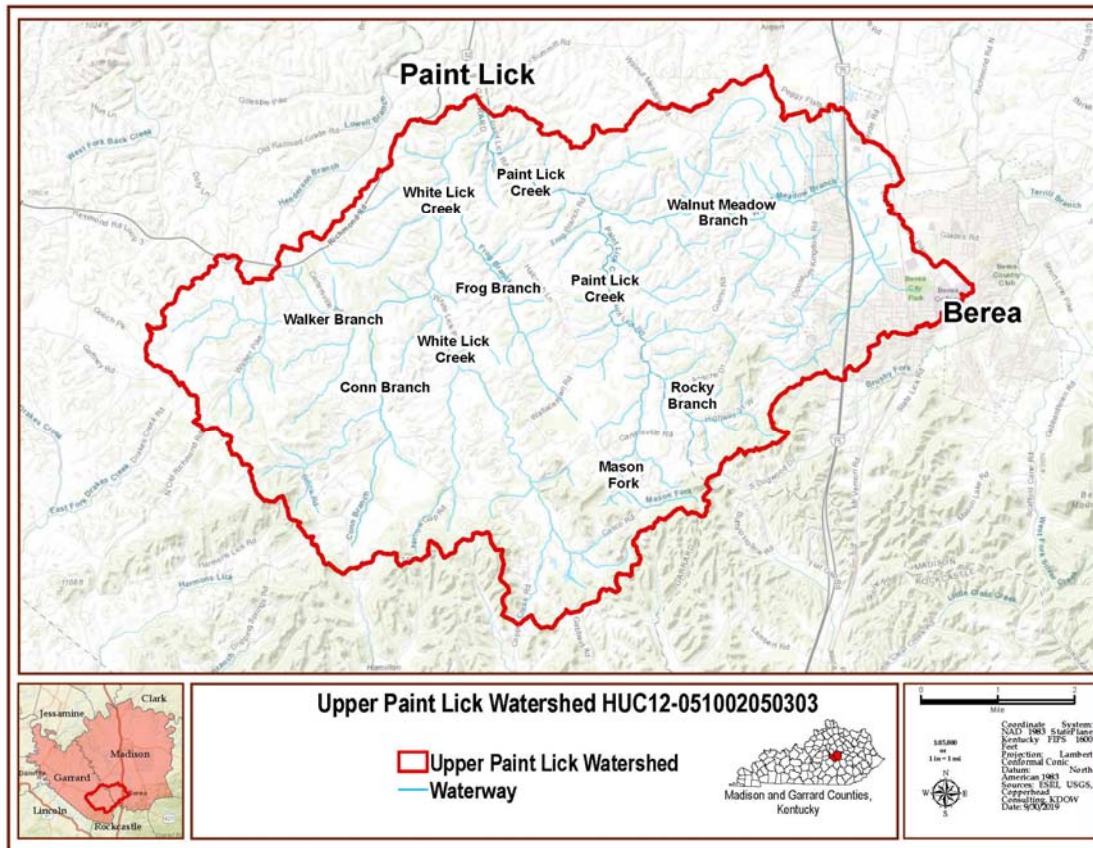
Did You Know ...

- Most Kentuckians depend on stream, rivers, and lakes for drinking water.
- More than a third of our waters have been seriously degraded.
- Most of the degradation has been caused by polluted runoff - things on the land or pavement that are washed into streams, rivers, and wetlands.
- Runoff pollutants include soil, lawn fertilizers, pesticides, pet waste, farm chemicals, oil/grease and other contaminants.
- Pollutants can be reduced or eliminated through better management of our fields and streets.
- Better management includes erosion and sedimentation control, reducing fertilizers and pesticides use, and protecting vegetation along waterways.



Upper Paint Lick Watershed





What Does Impaired Mean?

“Impaired water” refers to a water body that does not meet water quality standards due to pollution. Within the Upper Paint Lick Watershed, Paint Lick Creek and White Lick Creek have been identified as impaired due to high fecal coliform and total suspended solids (TSS) levels.

Why Are We Doing This?

We hope to work closely with farmers and residents to identify water quality problems and potential solutions and strategies to improve watershed health. Our intent is for the Upper Paint Lick Watershed Plan to serve as a model for other rural areas of Kentucky.



THIS WORK WAS FUNDED IN PART BY A GRANT FROM THE U.S. ENVIRONMENTAL PROTECTION AGENCY UNDER §319(H) OF THE CLEAN WATER ACT.

What Are Our Goals?

- Build partnerships with local officials, landowners, farmers, educational institutions, and citizen monitoring programs
- Conduct water quality sampling and analysis
- Identify water quality concerns, develop solutions, and implement programs to improve watershed health.

For more information, please contact:
mmarchaterre@copperheadconsulting.com

We Need Your Help!

- Reduce wastes from entering our streams including pet, animal, and farm wastes
- Properly apply and reduce usage of fertilizers, pesticides, and herbicides
- Protect the vegetation on stream banks
- Get involved with our program and receive best management advice for your property!